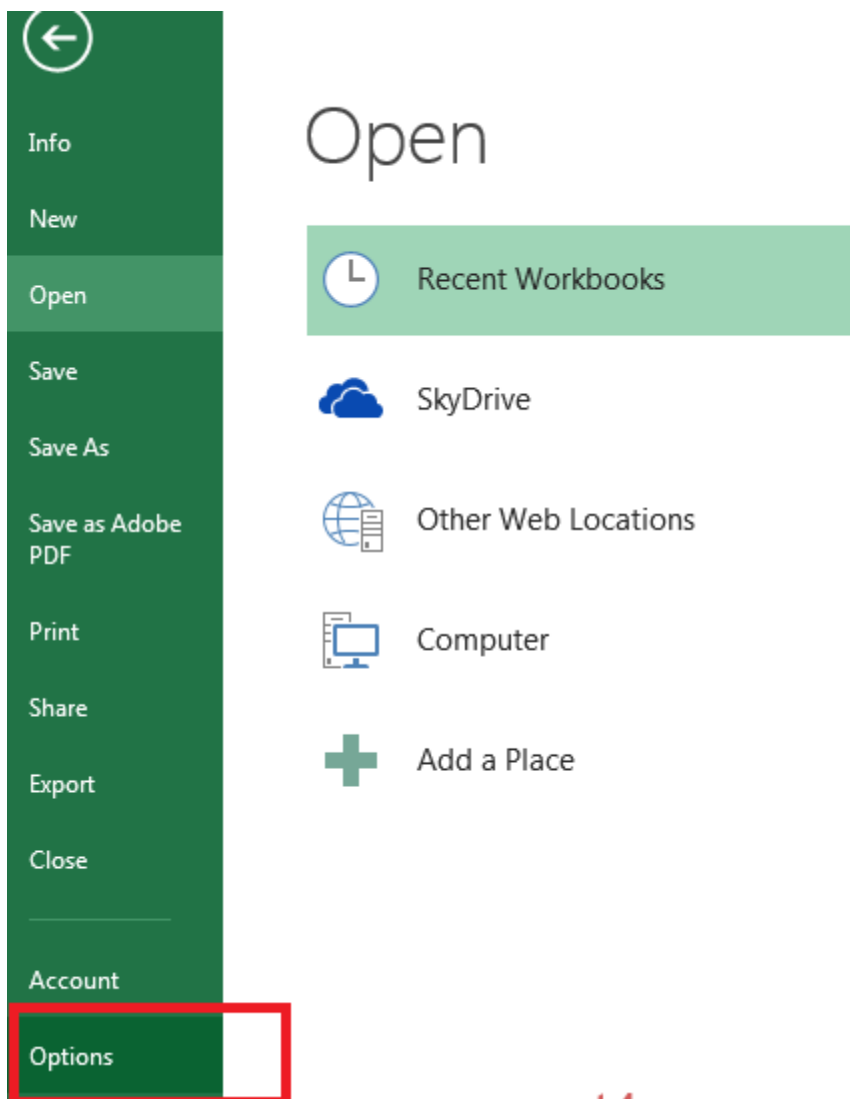


## Excel and IE Setups for Oracle Web ADI

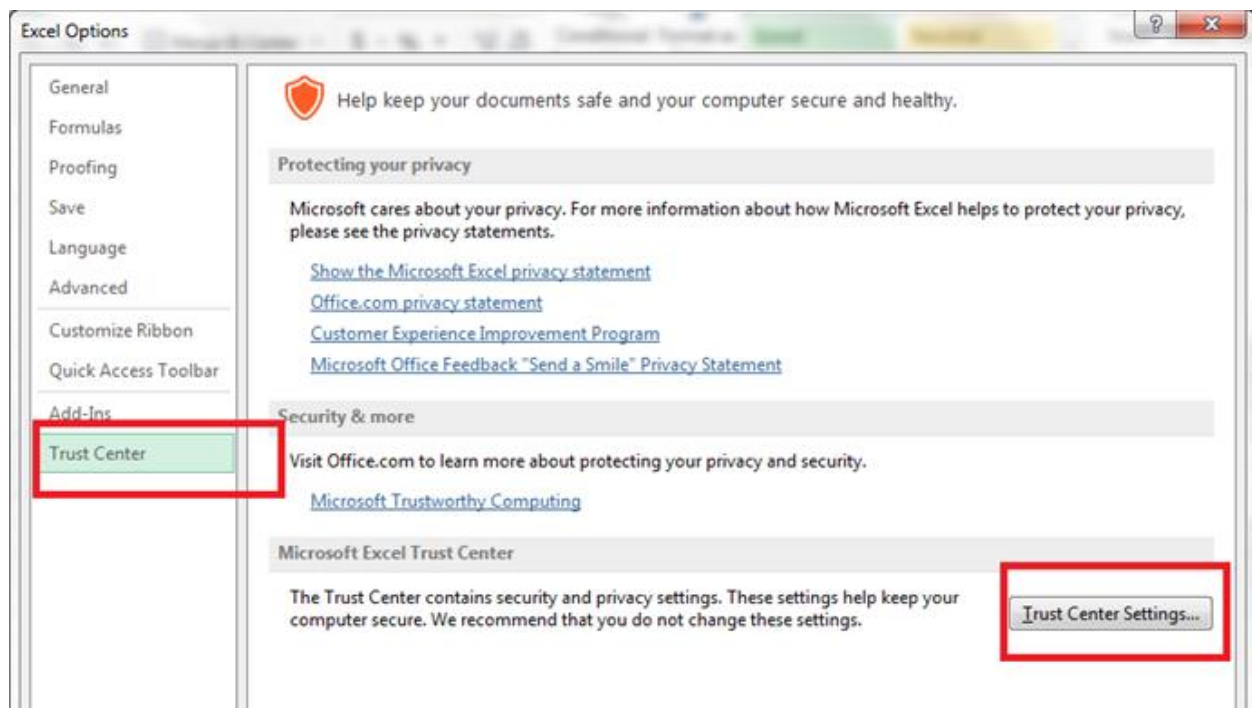
There are few setups that you have to do on Microsoft Excel and Internet Explorer to work with Oracle Web ADI.

### Excel Setups

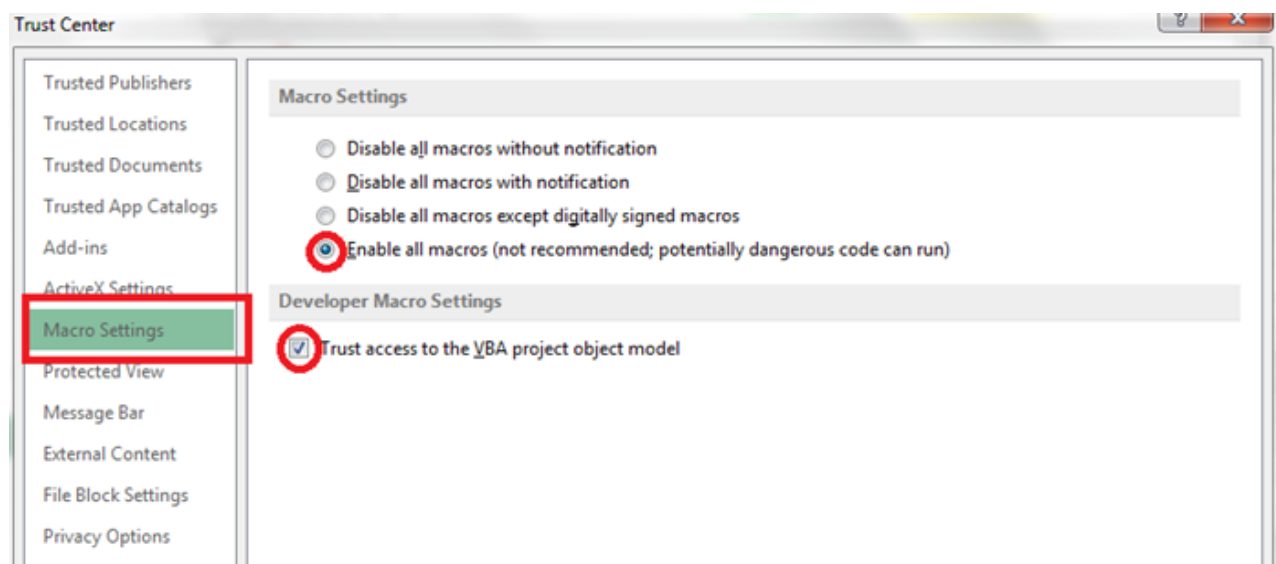
1. Open Excel and go to **File > Options**



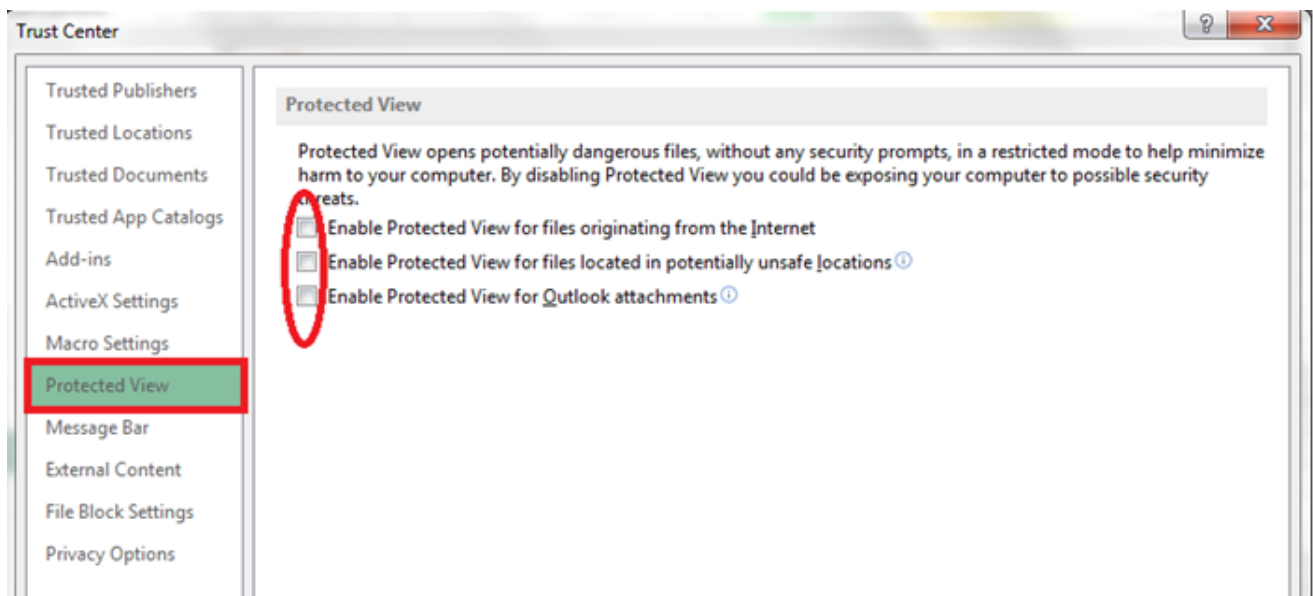
You will see a new window as shown below. Select “**Trust Center**” on the left navigation pane and then click on “**Trust Center Settings**”:



Select “**Macro Settings**” on the left navigation pane. Under Macro Settings, select “**Enable all macros**”. Under “**Developer Macro Settings**”, select “**Trust access to the VBA project object model**”. See the image below for more details.



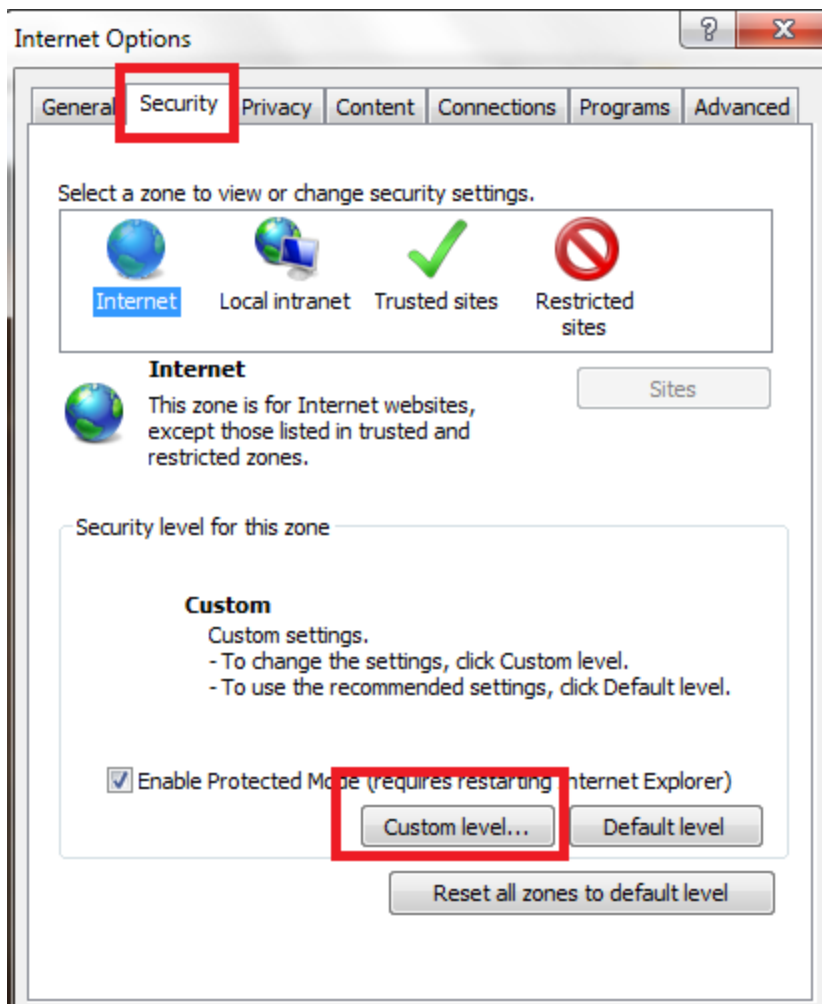
Next step is to navigate to the “**Protected View**” option on the left navigation pane. once you are there, un-check all the protected view options as show below:



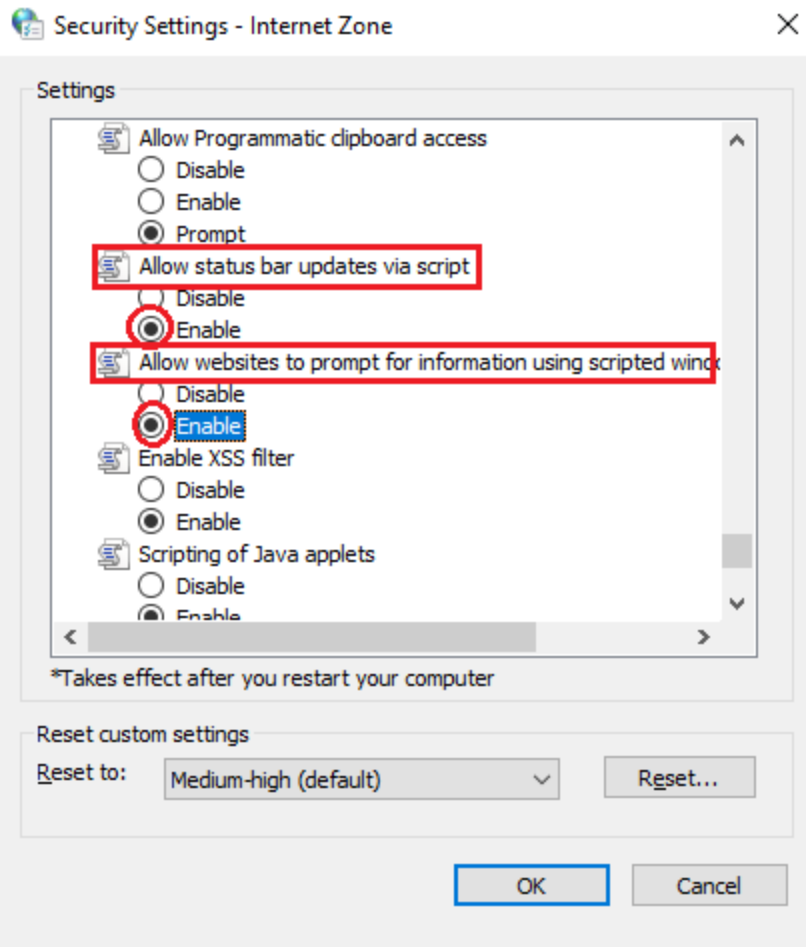
Click “Ok” and close Excel.

## Internet Explorer Setups

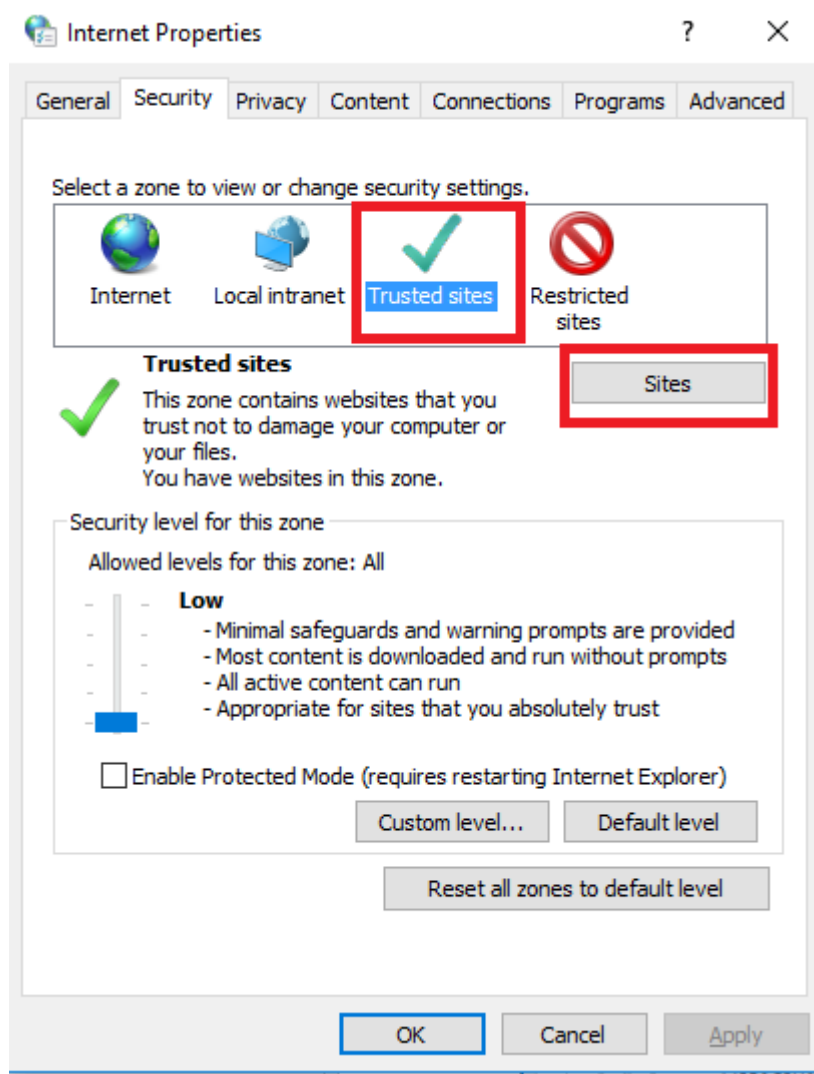
Open IE and navigate to IE > Internet Options and select “**Security Tab**”. Select zone as “**Internet**” and click on “**Custom Level**”:



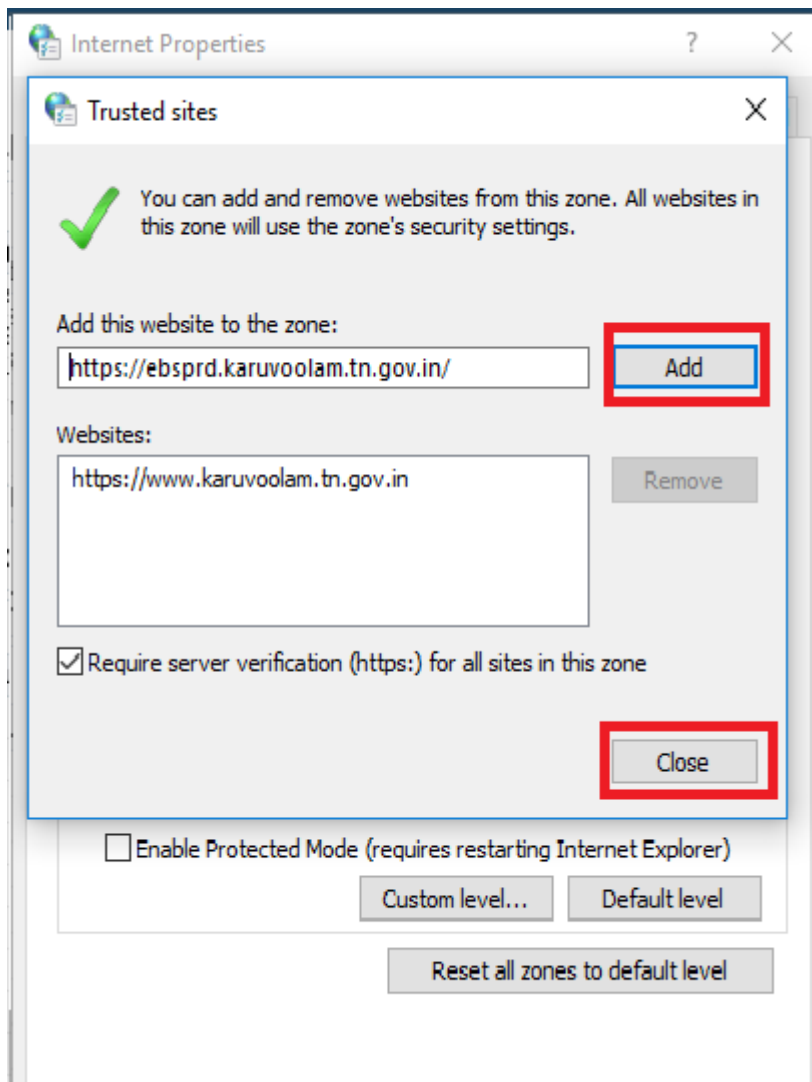
Scroll down and then “Enable” the “*Allow status bar updates via script*” option.



Open IE and navigate to IE > Internet Options and select “**Security Tab**”.  
Select as “**Trusted Sites**” and click on “**Sites**”:



Add the URL(<https://ebsprd.karuvoolam.tn.gov.in>) and Click on ADD & Close button.



Close and Re-Open IE. Go ahead and try to open Web ADI Documents and it should be working fine